

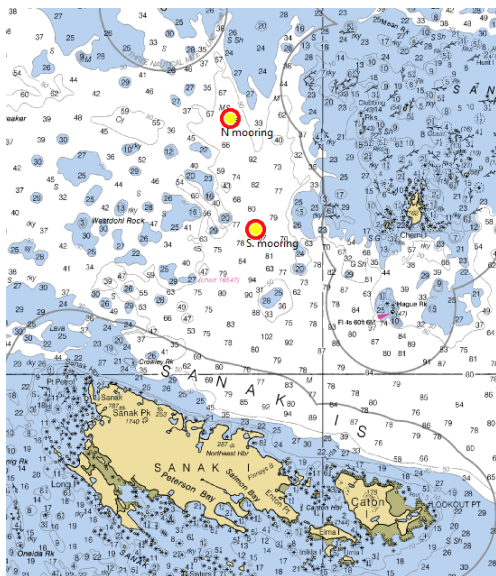
Please Post

Two Bottom-Mounted Echosounders Deployed in Sanak Trough (Nov 2016 – July 2017)



- 2 trawl-resistant, bottom-mounted echosounders have been deployed in the Trough for the duration of the 2016 pollock spawning season (Nov-May) to help predict pollock biomass.
- The moored echosounders will be used to optimize timing of the annual acoustic survey of pre-spawning pollock in Sanak Trough.

Please try to avoid fishing near the seafloor at the mooring locations as the trawl-resistant moorings are likely not truly “trawl-resistant.”



Mooring locations

Mooring locations are indicated by the red/yellow circles.

North: N 54° 42.606' W 162° 37.872'

South: N 56° 37.151' W 162° 35.695'

Bottom-mounted trawl-resistant echosounder mooring rests directly on the seafloor. The mooring is 2 ft high with a 4 x 6 ft base. It is anchored with a 550 lb piece of plate steel (not visible). There is no mooring line. Buoyancy within the green cover will allow the cover and enclosed electronics to float to the surface during recovery operations.

Contact information: Chris Wilson, 206 526 -6435 (chris.wilson@noaa.gov), Alex De Robertis, 206-526-4789 (alex.derobertis@noaa.gov), Alaska Fisheries Science Center (AFSC), Seattle, WA.